



Rainford Family Ancestors


Overview of the ancestors who brought the family to the USA



George Rainford

Born about 1 Jun 1812 [uncertain] in London, England [uncertain]
Died 6 Mar 1892 in Lake Village, Newton Co., Indiana, United States



Harriet Strickland 

Born about 1814 [uncertain] in St Mary's, Lambeth, Surrey, Eng.
Died 7 Oct 1851 in Joliet, Will, Illinois, USA

George Charles Rainford

Born 2 Nov 1837 in St.Johns Square, Haymarket, London, Middlesex England
Died 15 Nov 1922 in Frankfort, Will, IL

Richard E Rainford

Born 8 Feb 1839 in Southwark St George Martyr, London, England
Died 22 Mar 1839 in St George, Southwark, Surrey, England

Mary Elizabeth Rainford

Born 23 Jun 1840 in All Souls, Marylebone, England
Died 30 Dec 1921 in Symerton, Florence Twp, Will, Illinois, USA

Harriet Catherine Rainford

Born 4 Jun 1845 in 103 Medway Street, London, England
Died 17 Feb 1933 in Deselm, Rockville, Kankakee, IL

Richard Edward Rainford

Born 20 Jul 1847 in Moody's Gardens, Westminster, England
Died 25 Oct 1848 in St Margaret, Westminster, England



Robert Rainford

Born 13 Sep 1849 in Joliet, Will, Illinois, United States
Died 20 Mar 1926 in Joliet, Will, Illinois, United States

First Family of George Rainford born in London. Both Richards died in infancy; other children emigrated to Illinois in 1849. Robert was born there; mother Harriet died in 1851.




George Rainford

Born about 1 Jun 1812 [uncertain] in London, England [uncertain]
Died 6 Mar 1892 in Lake Village, Newton Co., Indiana, United States



Margaret Wilcox

Born 26 Sep 1832 in York, Illinois USA
Died 27 Nov 1908 in Lake, Indiana, United States

<p>Meta Morrilly Wilcox Born 5 Aug 1851 in Rockville, Kankakee, Illinois, USA Died 1 Feb 1931 in Los Angeles, California, USA</p>	<p> Alice Rainford Born 6 Nov 1856 in Rockville, Kankakee, Illinois, USA Died 1898 in Fort Ripley, Crow Wing, Minnesota, USA</p>	<p>William Rainford Born 4 May 1858 in Rock Creek, Carroll, Illinois, USA Died 7 Apr 1937 in Lake Village, Newton, Indiana, USA</p>	<p> Herbert Rainford Born 28 Oct 1861 in Rockville, Kankakee, Illinois, USA Died 6 Oct 1943 in Lake Village, Newton, Indiana, USA</p>	<p>Henry Milton Rainford Born 21 Apr 1863 in Rockville, Kankakee, Illinois, USA Died 5 Jun 1944 in Lake Village, Newton, Indiana, USA</p>	<p> Albert Rainford Born 24 Aug 1864 in Rockville, Kankakee, Illinois, USA Died 7 Mar 1939 in Beaver, Newton, Indiana, USA</p>	<p> Ida May Rainford Born 11 Mar 1866 in Rockville Twp, Will Co, Illinois, USA Died 10 Apr 1924 in Lake, Indiana, USA</p>	<p> Walter A Rainford Born 19 Jun 1867 in Rockville, Kankakee, Illinois, USA Died 1947 in Lake Village, Newton, Indiana, USA</p>	<p>John Raymond Rainford Born 25 Aug 1869 in Rockville, Kankakee, Illinois, USA Died 23 Feb 1936 in Chicago, Cook, Illinois, USA</p>	<p> Margaret H Rainford Born 28 Jan 1871 in Rockville, Kankakee, Illinois, USA Died 3 Feb 1940 in Gary, Lake, Indiana, USA</p>	<p>Nathaniel Rainford Born 1873 in Rockville Twp, Will Co, Illinois, USA Died 1885 in Lake Village, Newton, Indiana, USA</p>	<p> Frederick Rainford Born 10 Sep 1874 in Rockville, Illinois Died 8 Jan 1955 in Lake Village, Lake, Indiana USA</p>	<p> Armanda Belle Rainford Born about 20 Nov 1877 [uncertain] in Rockville, Kankakee, Illinois, USA Died 21 Nov 1976 in Helena, Lewis and Clark, Montana, United States of America</p>
--	--	--	---	--	--	--	--	---	--	---	---	--

Robert Rainford

-son of George Rainford
-son of Harriet Strickland
-born 1849, Harriet died 1851 and he was raised by his sister Mary Eliz
-married Betsey Ann Franklin 1870

3 children:

- Willis Robert
- Sarah Elizabeth “Essie”
- Lillian Cora

He raised the six children of Lillian after she died in 1919.

Died 1926, buried in Illinois.



Robert Rainford

13 Sep 1849 - 20 Mar 1926
Joliet, Will, Illinois, United States

Brother of [George Charles Rainford](#)

[Richard E Rainford](#), [Mary Elizabeth \(Rainford\) Cowan](#), [Harriet Catherine \(Rainford\) Corlett](#), [Richard Edward Rainford](#), [Meta Morrilly \(Wilcox\) Slusser](#), [Alice \(Rainford\) Rouse](#), [William Rainford](#), [Herbert Rainford](#), [Henry Milton Rainford](#), [Albert Rainford](#), [Ida May \(Rainford\) Rouse](#), [Walter A Rainford](#), [John Raymond Rainford](#), [Margaret H Rainford](#), [Nathaniel Rainford](#), [Frederick Rainford](#) and [Armanda Belle Rainford](#)

Husband of [Betsey Ann \(Franklin\) Rainford](#)

Father of [Willis Robert Rainford](#), [Sarah Elizabeth \(Rainford\) Carroll](#) and [Lillian Cora \(Rainford\) Hundley](#)



[George Rainford](#)

abt 01 Jun 1812 - 06 Mar 1892
London, England



[Harriet Strickland](#)

abt 1814 - 07 Oct 1851
St Mary's, Lambeth, Surrey, Eng.



[George Charles Rainford Sr](#)

1782 - 06 Jan 1849
England



[Marie Heywood](#)

abt 1780 -
England



[Charles George Strickland](#)

1789 - 13 Nov 1840
St Martin in the Fields, Middlesex,
England



[Catherine Strickland](#)

abt 1788 - 04 Apr 1836
London, England

Robert Rainford



Willis Robert Rainford

Born 1871

His mother Betsey died in 1889

Worked with his father Robert as a painter and fencemaker in Illinois.

Married Lola Mae Besse, had 3 sons. He wanted to homestead and Lola didn't. He moved to Montana with the oldest son, Alvin, and she went to her family in SD with Calvin and Clyde.

1911 Fergus County Montana homestead

1920 proved 320 acres of ranchland

Built his cabin at age 80 by himself. Died 1958

Spouse and Children



Willis Robert Rainford

1871-1958 • Male



Lola May Besse

1878-1960 • Female

Marriage

24 December 1901



Rensselaer, Marion Township, Jasper, Indiana,
United States

Children (3)



Alvin Alden Rainford

1902-1971 • Male



Calvin Robert Rainford Sr

1904-1972 • Male

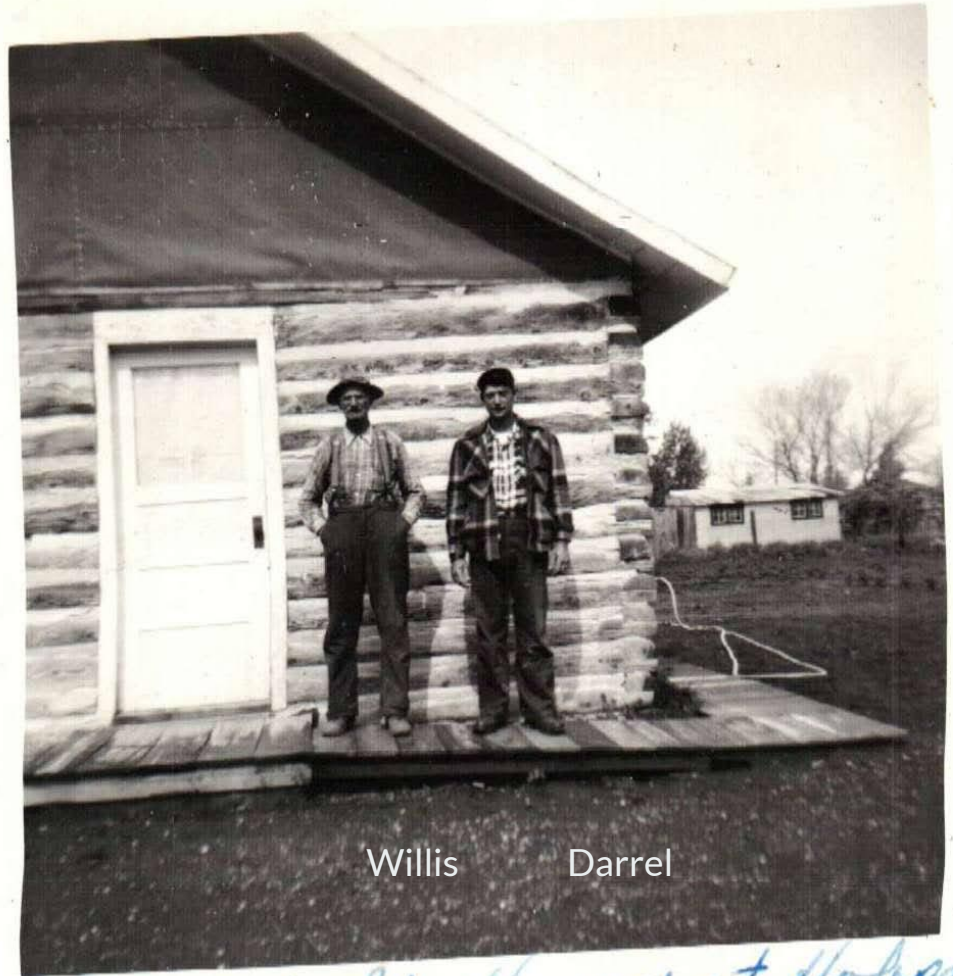
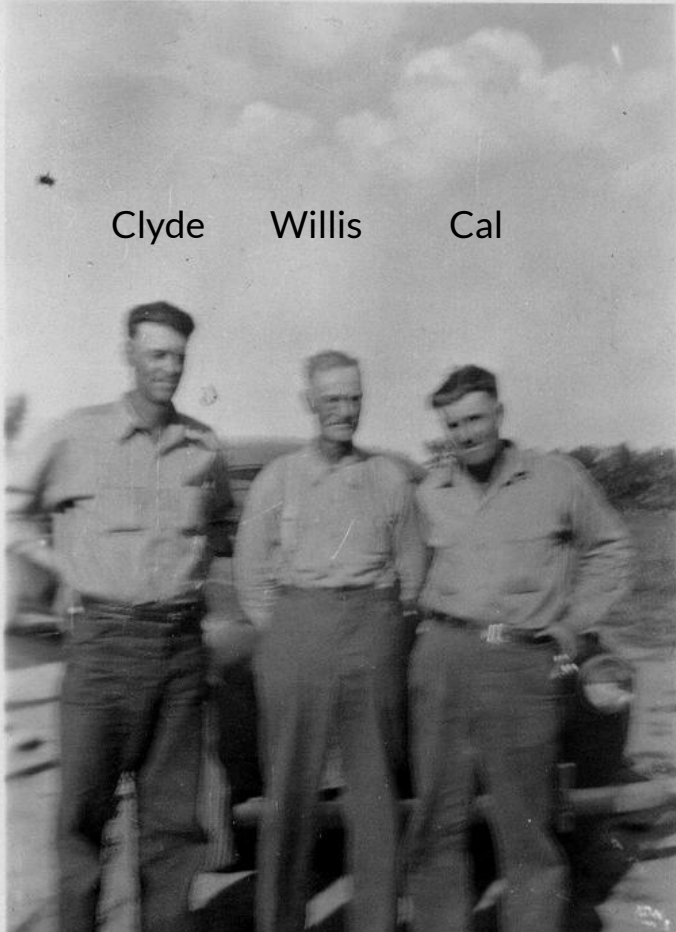


Clyde Willis Rainford

1905-1948 • Male

Willis Rainford

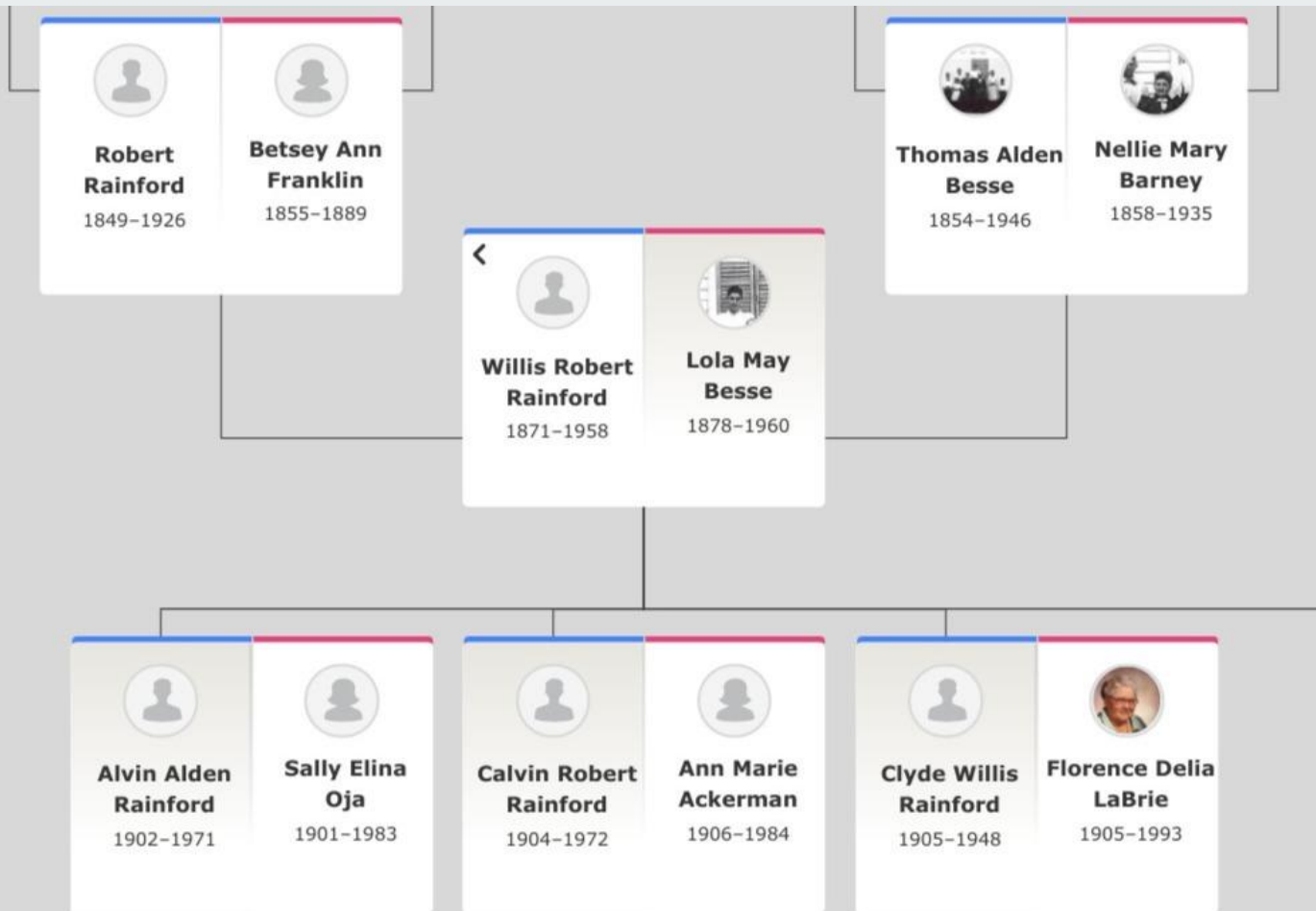
Clyde Willis Cal



Willis Darrel

Willis Rainford at Hobson

Lola Mae Besse Rainford



Lola Mae Besse Rainford



Alvin Alden Rainford

1st Son of Willis & Lola

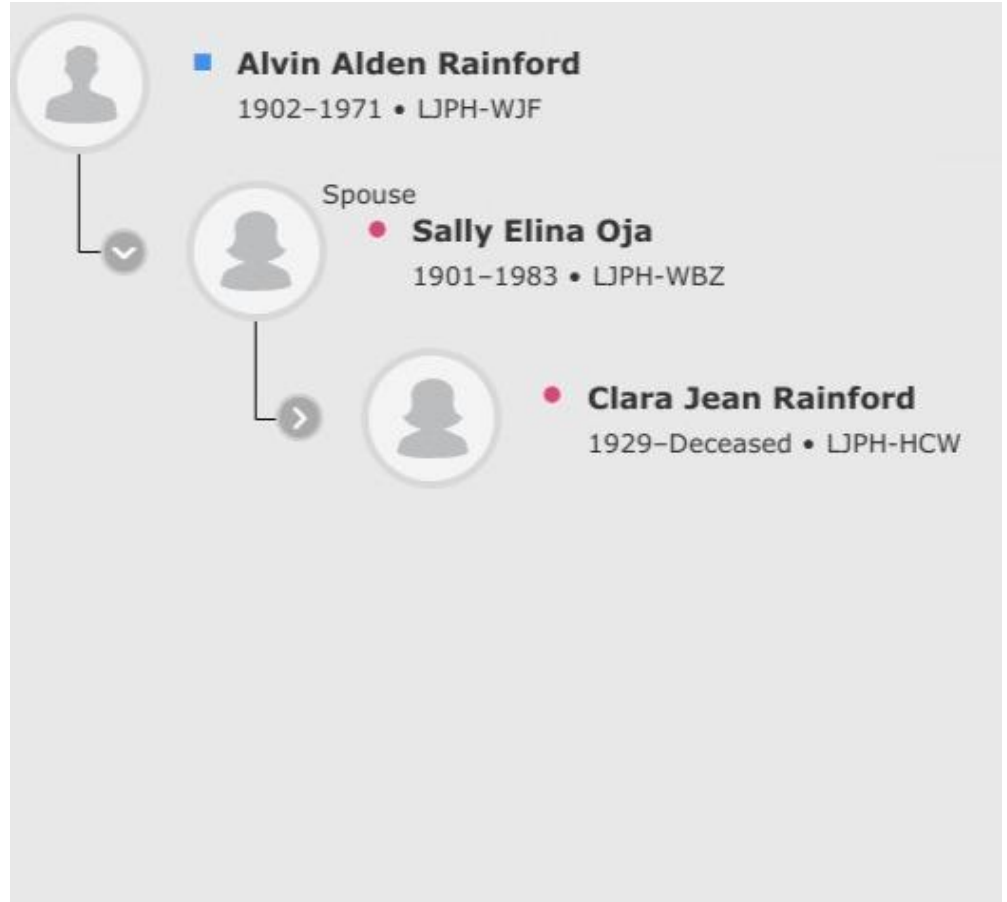
Grew up in Montana with his father, Willis

Married Sally Oja, a Dutch immigrant, and moved to California

Had one child:

- Clara Jean Rainford

Died 1971, buried California



Alvin Rainford

Alvin and Cal



Lola and Al's wife Sally



Daughter Claire



Calvin Robert Rainford

2nd son of Willis & Lola

Raised in SD with Clyde by Lola; she kept house for bachelor farmer twins.

Married Ann Marie 1927 in Aberdeen

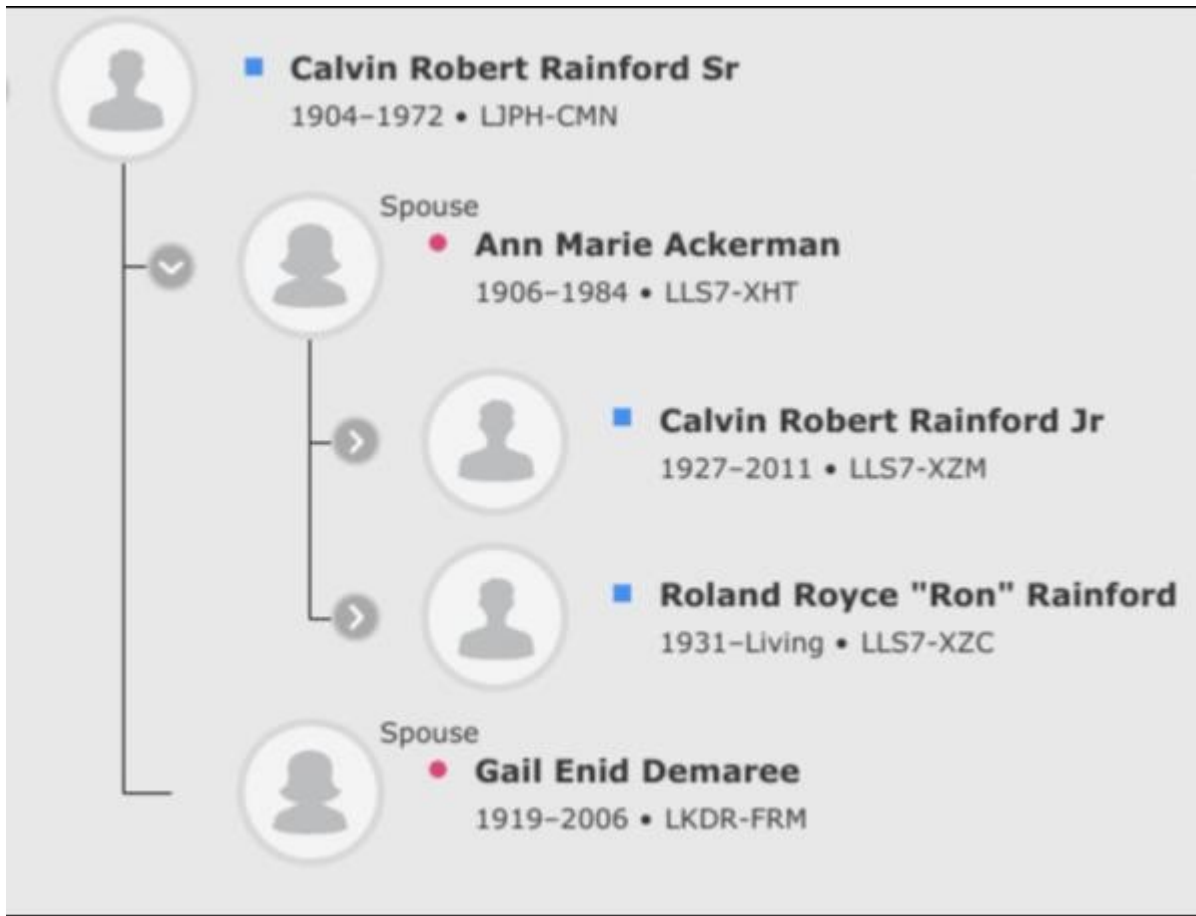
Sons:

- Calvin Jr called "Bob"
- Roland Royce called "Ron"

Lived in Billings, Montana; built a house there for Lola

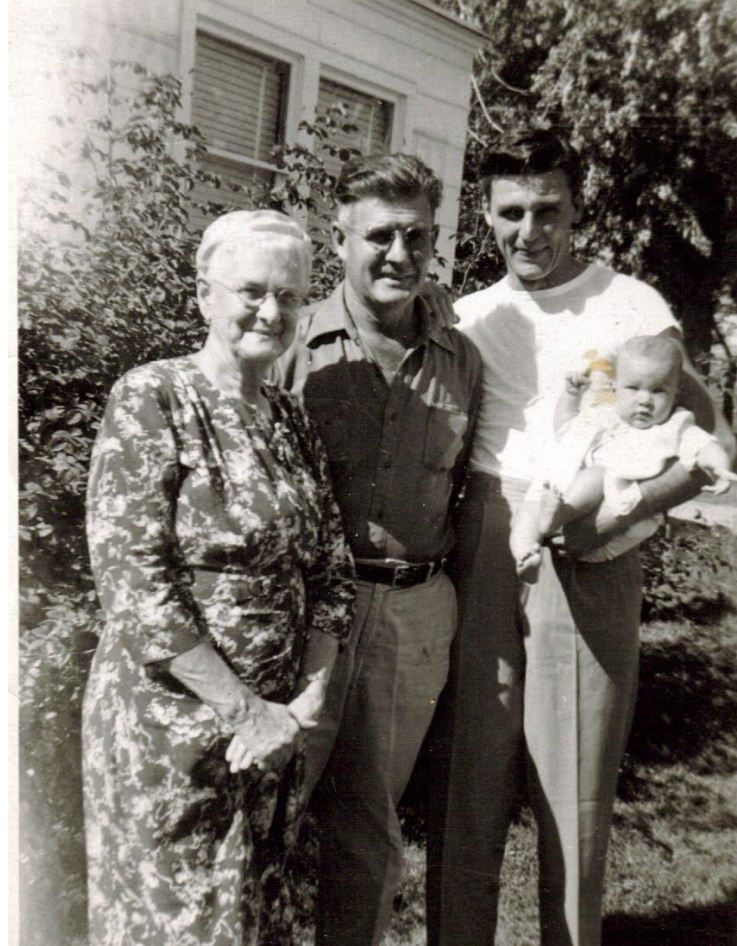
Married Gail in 1940

Died 1972, buried in Montana



Cal Rainford

4 Generations: Lola, Cal, Cal Jr (Bob), Cindy



Ann Marie Ackerman Rainford Romsland

Came to Minot, ND as a child

Born in Odessa, Ukraine

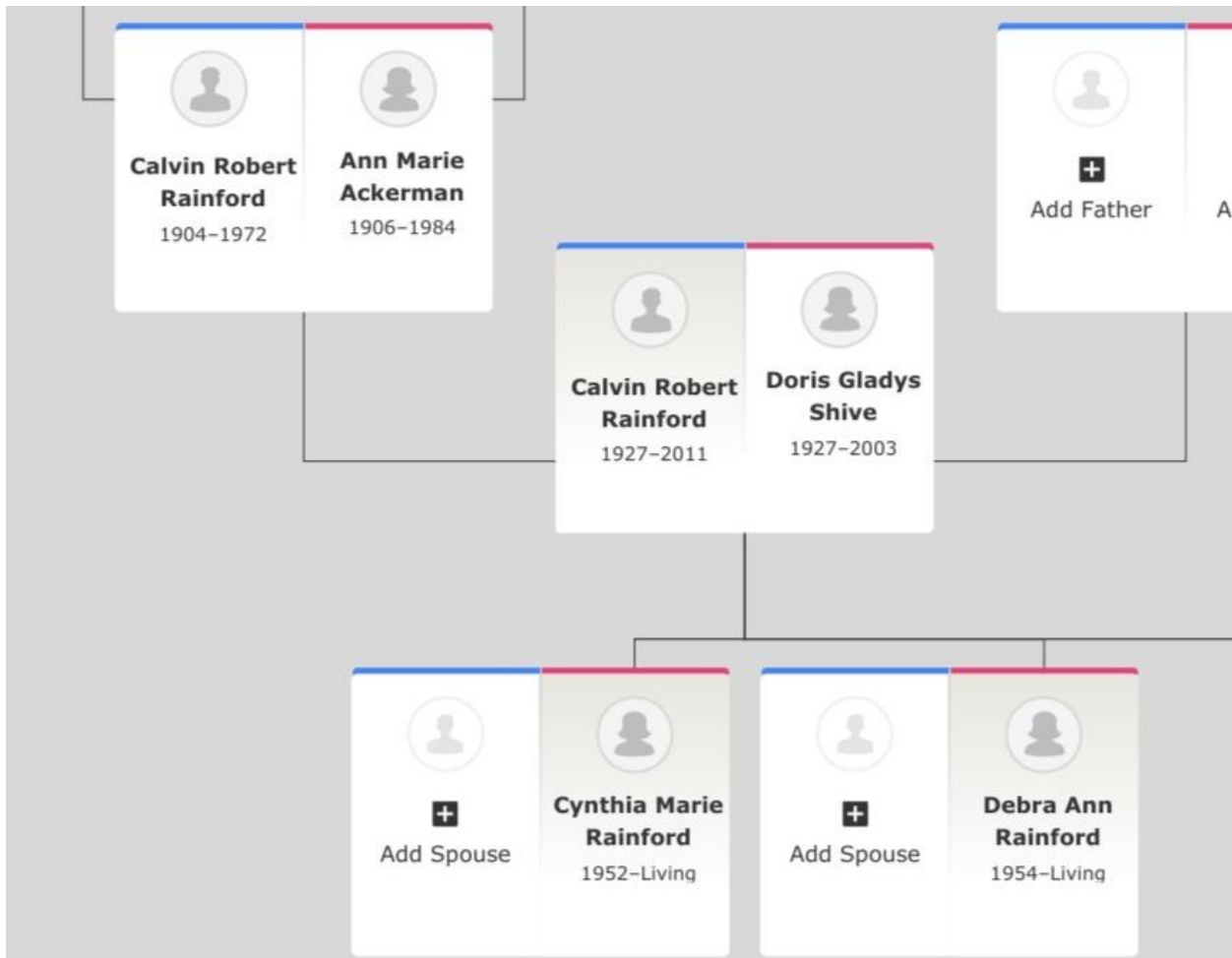
Married 1927 to Calvin Rainford, had 2 sons

Married 1945 to Arne Romsland

Died 1984



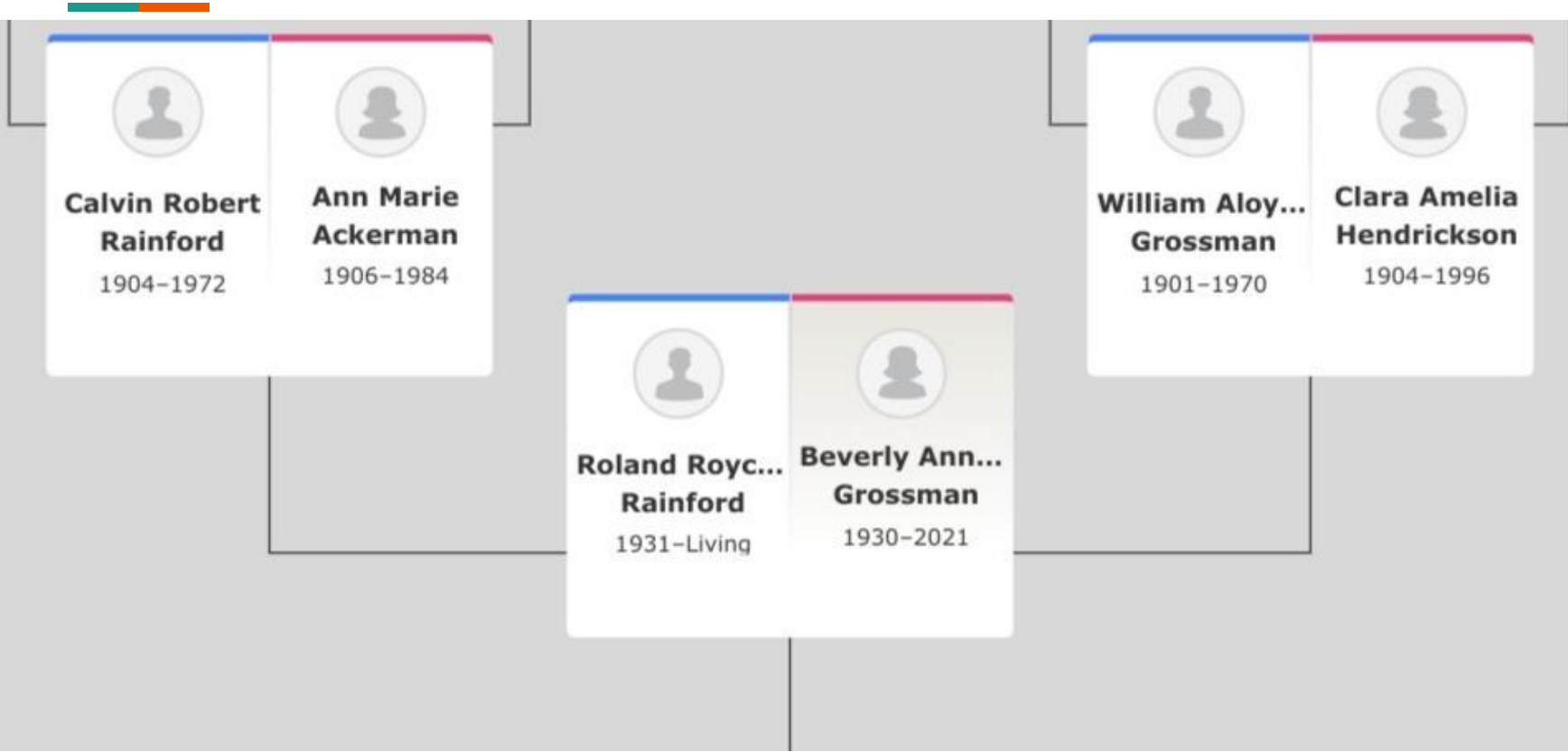
Calvin Robert "Bob" Rainford



Bob and Doris Rainford



Roland Royce "Ron" Rainford



Ron Rainford



Jan mil

Beverly Grossman Rainford

Known for her exceptional knitting and baking with kids, Bev was born in Minnesota and recently passed away in Los Vegas, Nevada. She was expert at moving during Ron's multiple assignments with the armed services. They raised six sons and one daughter.



Bev. + Rollie

Clyde Willis Rainford

3rd son of Willis & Lola

Raised in SD with brother Cal by Lola

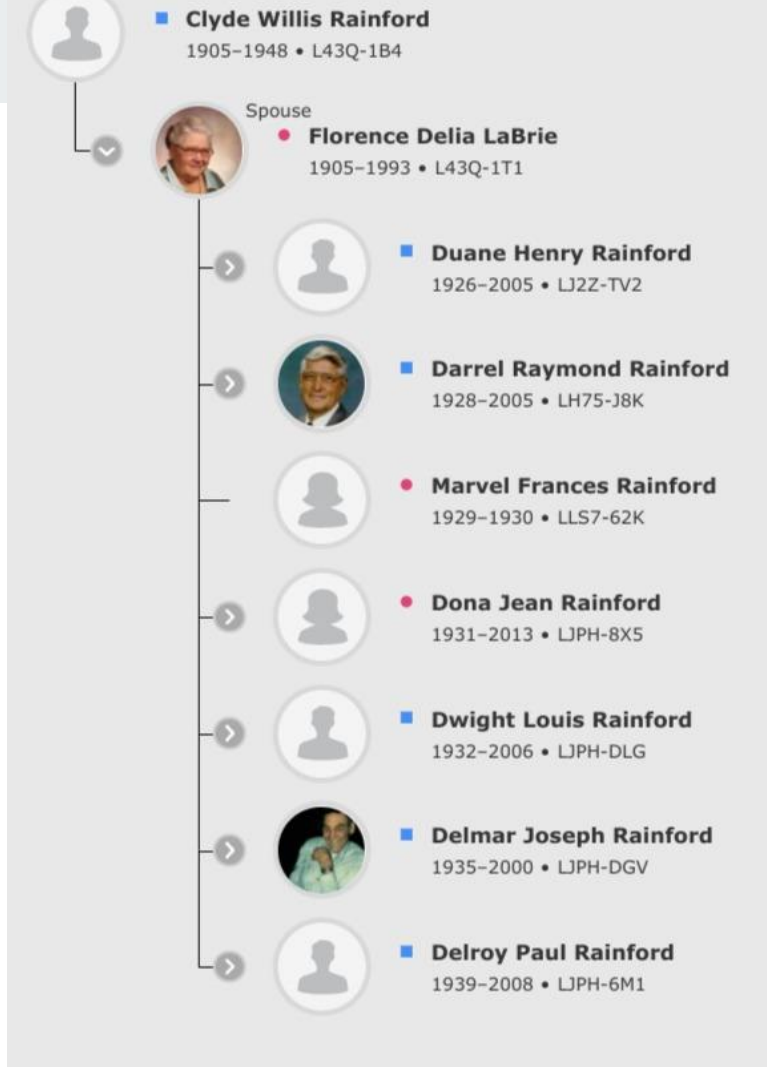
Married Dolly LaBrie Dec 1925 in Doland

Father of 10 children

- Darlene, Diane and Delaine

Farmed in Spink County, SD

Died 1948, buried in Doland SD



Clyde Rainford

Clyde



Clyde and Dolly



Florence Delia LaBrie Rainford

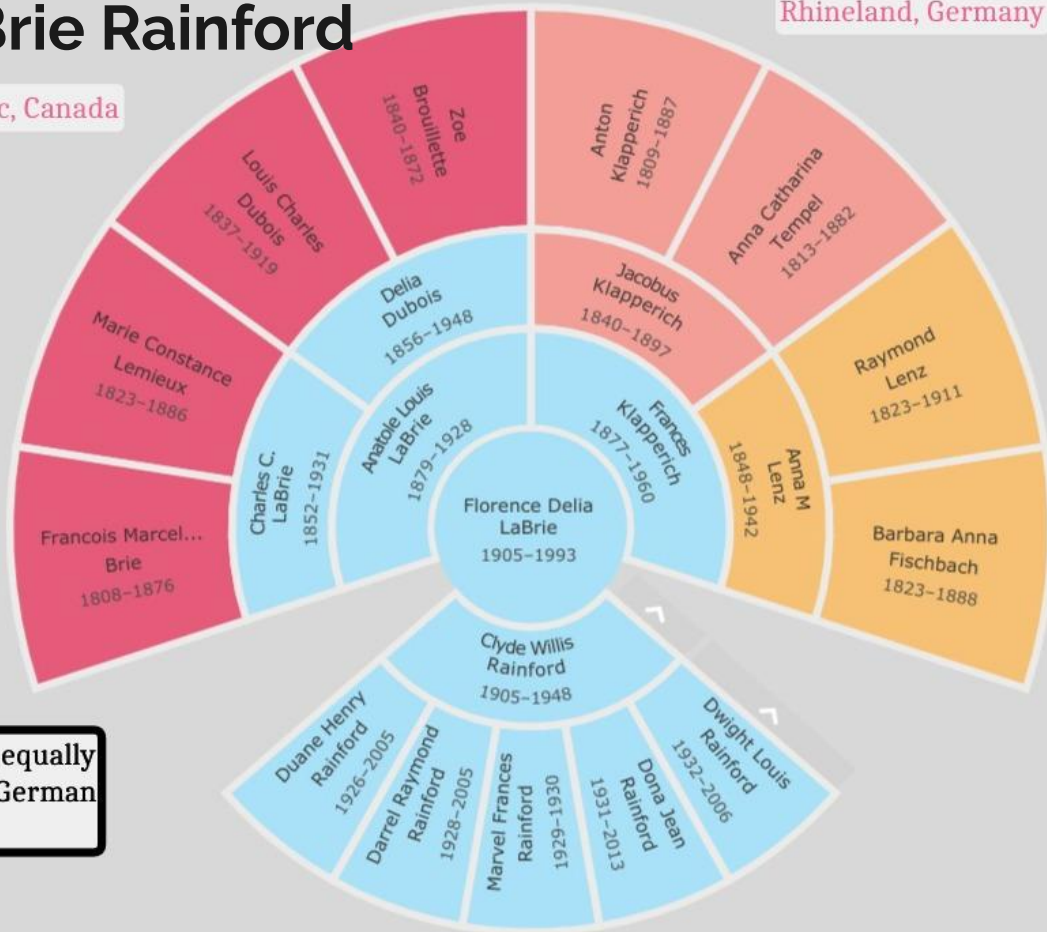


Quebec, Canada

Rhineland, Germany

German Bohemia

Dolly was equally
French & German
heritage



Options

Birth Country

- United States
- Canada
- Germany
- Austria
- Unknown

Dolly Rainford

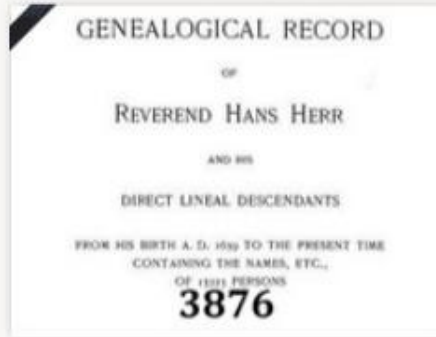


Rainford Family 1951
Back row: Dolly, 46 Diane, 10 Darlene, 14 Dona Jean, 20
Front row: Delroy, 12 Dwight, 19, Delaine, 3 Darrel, 23 Delmar, 16

Interesting Ancestors we all share: Mennonites

Mennonites settled Philadelphia, coming from Swiss and Prussian locations where they were persecuted for their religion.

Elizabeth was a direct descendant of the Herr founders. She doesn't appear to have continued the religion after she married Jonathan Besse, who was the grandfather of Lola Besse



Our Mennonite ancestor

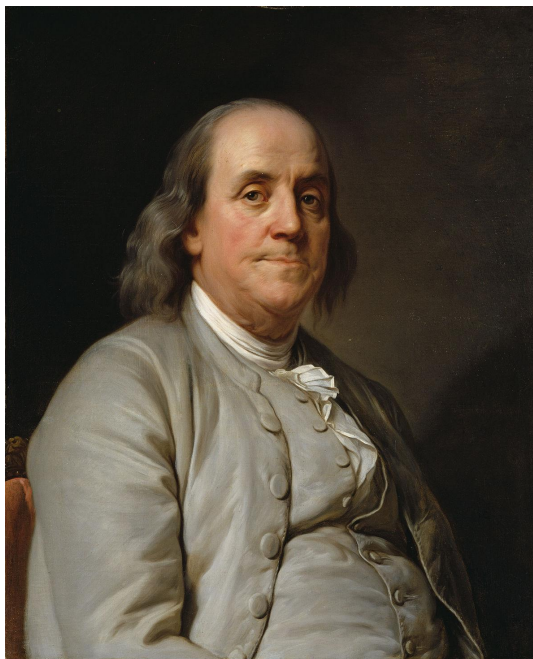
Elizabeth "Rebecca" A. (Grove) Besse MP

Gender: Female
Birth: 1824
Hermitage, Wayne, Augusta County, Virginia, United States
Death: August 12, 1897 (72-73)
Clayton, Summers County, West Virginia, United States
Immediate Family: Daughter of [Benjamin Grove](#) and [Susan \(Browning\) Grove](#)
Wife of [Jonathan Besse](#)
Mother of [John Grove Besse](#); [Thomas Alden Besse](#); [Susan J Besse](#); [Mary Elizabeth Besse](#) and [George William Besse](#)
Sister of [Mary Jane \(Grove\) Smith](#); [John Benjamin Graft](#) and [Thomas A. Grove](#)

Interesting Ancestors we all share: Ben Franklin


Benjamin Franklin, father of our country, is our 1st Cousin, 10 times removed. (Removed means 10 generations past.)

Robert Rainford, our first ancestor born in the United States, married Betsey Ann Franklin. She was the stepdaughter of Robert's sister, Mary Elizabeth Rainford. From her father Jason, it's a direct line to Ben Franklin's uncle.



Benjamin Franklin 1706-1790
1st cousin 10x removed
▼
Josiah Franklin 1657-1744
Father of Benjamin Franklin
▼
Thomas Franklin 1598-1682
Father of Josiah Franklin
▼
James Franklin 9GG 1650-1721
Son of Thomas Franklin
▼
John F Franklin 8GG 1683-1728
Son of James Franklin 9GG
▼
John Franklin 7GG 1712-1754
Son of John F Franklin 8GG
▼
Viall Franklin 6GG 1736-
Son of John Franklin 7GG
▼
Samuel Sr. Franklin 5GG 1764-1817
Son of Viall Franklin 6GG
▼
Samuel Franklin 4GG 1794-1849
Son of Samuel Sr. Franklin 5GG
▼
Jason Franklin 3GG 1825-1874
Son of Samuel Franklin 4GG
▼
Betsey Ann Franklin 2GG 1855-1889
Daughter of Jason Franklin 3GG
▼
Willis Robert Rainford GG 1871-1958
Son of Betsey Ann Franklin 2GG

Interesting Ancestors: Jean Mignot dit Labrie



The surname of Dolly's ancestors was Mignault or Mignot in France.

But as early settlers of Quebec, there were so many Mignot descendants that Jean's branch was called Labrie. So they were Mignot dit (pronounced dee) Labrie and then just Labrie.

BIRTH 1665 • Île-de-France, France

DEATH 6 DEC 1735 • Quebec, Canada

Jean Mignault Mignot dit Labrie 1665-1735

5th great-grandfather

Charles Mignault 1705-1759

Son of Jean Mignot dit Labrie

Francois Migneault Mignot dit Labrie 1746-1822

Son of Charles Mignault

Francois Marcelle "Francois" Labrie 1781-1844

Son of Francois Migneault Mignot dit Labrie

Francois Marcelle "Marcelle" Labrie 1808-1876

Son of Francois Marcelle "Francois" Labrie

Charles LaBrie 1852-1931

Son of Francois Marcelle "Marcelle" Labrie

Anatole Louis "Ben" LaBrie 1879-1928

Son of Charles LaBrie

Florence Delia Labrie 1905-1993

Daughter of Anatole Louis "Ben" LaBrie

Interesting Ancestors: Filles du Roi



Filles du Roi means ‘daughters of the King’ and it is the name given to about 700-800 women who emigrated from France to Quebec in the middle of the 17th century. French soldiers who were battling to hold the new country for France needed a wife, preferably a good French wife. So Louis XIV (King of France) sponsored young women of good reputation who agreed to go to the New World. Each *Fille* received her ship passage, a hope chest and room and board until her marriage, although there wasn’t long to wait. Most Filles had multiple offers of marriage at the ship dock.